

**Product number: K6-1037**

**Product name: K37**

## General Data

**Molecular Mass:** 365.40

**Solubility:** toluene, alcohol, chloroform, DMF, DMSO

**Insoluble:** water

**Storage:** Store in absence of light at room temperature

## Description

- Cholesterol and triglycerides sensitive fluorescent probe.

## Applications

- Determination of cholesterol and triglycerides in biological liquids [1–5].

[1] SU Patent 1457386 (1988)

[2] SU Patent 1476384 (1989)

[3] Lapshin E.N. et al. Application of fluorescent probes in medical diagnosis. Part 2: A Fluorescent assay for atherogenic lipoproteins. Sov. Medical Reviews. Sect. B: Physicochemical Aspects of Medicine. **1991**, vol.3, part 1, p.p.37-101.

[4] Demyanov G.V. et al. Characteristics of molecular fluorescence of a lipid probe in human blood lipoproteins exposed to synchrotron radiation. Nuclear Instruments and Methods in Physics Research, Sec. A, **1995**, vol.A-359, 342-344.

[5] Akimov A.V. et al. Nuclear Instruments and Methods in Physics Research, Sec. A, **1995**, vol. A-359, p.p.345-347.

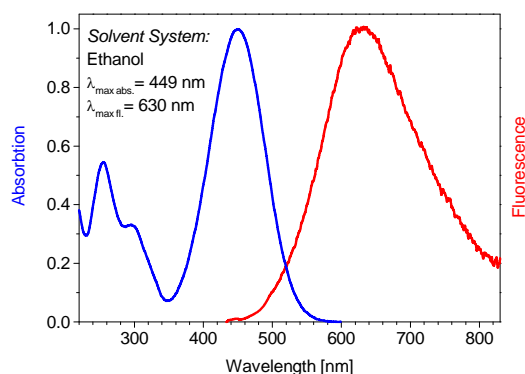
## Advantages

- Highly fluorescent probe.
- Perfectly suited for excitation with the 405-nm, 436-nm and 470-nm diode lasers.
- Large Stokes' shift (> 100nm).

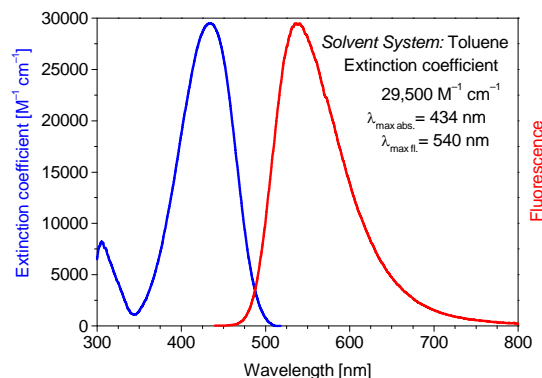
## Spectral Data

Sample	Solvent System	Absorption max. [nm]	Extinction Coefficient [M <sup>-1</sup> cm <sup>-1</sup> ]	Fluorescence <sup>1</sup> max. [nm]	Quantum Yield <sup>1</sup> [%]
Free dye	Ethanol	449		630	0.7
	Toluene	434	29,500	540	49
	Cholesterol in water			540	

<sup>1</sup> Excitation at 420 nm



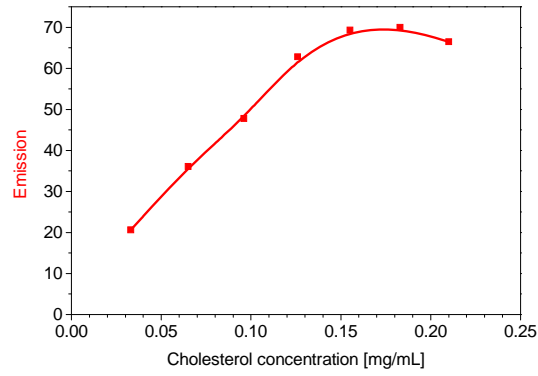
Absorption and emission spectra of **K37** in ethanol



Absorption and emission spectra of **K37** in toluene

**Product number: K6-1037**

**Product name: K37**



Fluorescence intensity of **K37** vs. cholesterol concentration